

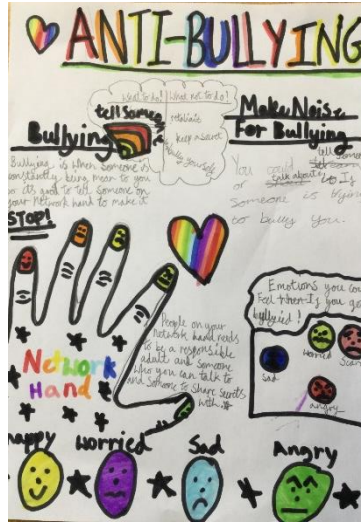
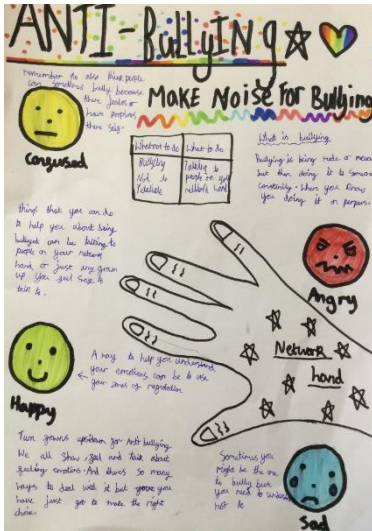


Weekly Update- Friday 17th November 2023



Willow Class

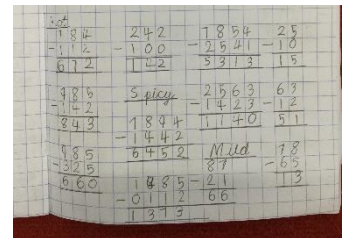
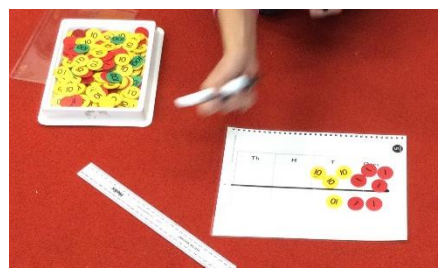
Across the school this week, one of our focusses has been 'Anti-Bullying week. The theme this year is 'Make A Noise About Bullying'. Oak and Willow joined forces to produce some information posters linked to this theme.



Maths- We arrived at our next stop on our maths train... **Subtraction**. We have been working hard to understand the method and how to apply it using different methods- bar model, part whole method and column subtraction. We started with a practical lesson and used a range of maths resources to help us visually, understand how to subtract. This really helped when starting to understand exchanging. It was great to see so many children applying previous learning from 'Column Addition' and using this to support with this new method.

Although a challenge at the start, we are very proud of ourselves as we achieved our personal goals. To support with column subtraction at home, I have uploaded two videos onto our class page. Click on the buttons to watch the videos.

[Willow Class - SIBFORD GOWER ENDOWED PRIMARY SCHOOL \(sibford-gower.oxon.sch.uk\)](http://sibford-gower.oxon.sch.uk)



Literacy- I have been blown away by the children this week. We have been learning about descriptive features to describe the Iron Man. Ask your children at home- they have learnt lots! They came up with the most incredible sentences- see below...

We then put all of this learning together, by creating our first paragraph for our character description.

The incredible Iron man was as tall as a skyscraper.

His great iron fingers swayed in the strong, dangerous wind.

The extraordinary machine had huge, mighty hands as large as 20 buses that could lift 200 pounds of steel.

The Iron man's warily legs kept taking huge, vast steps on the brink of the cliff.

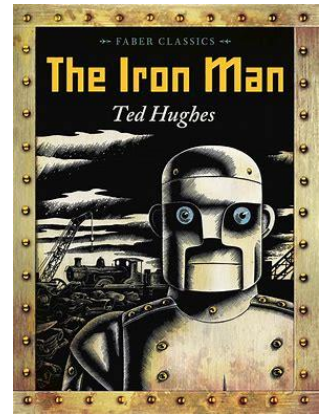
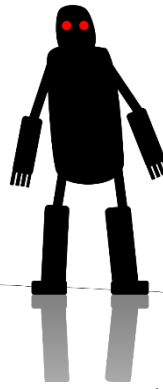
The gigantic, rusty robot had crystal blue eyes that starred delicately into the distance.

The bumpy giant had twitchy eyes that glowed in the dull darkness. Iron man was so powerful he could break gigantic oak trees in seconds into matchsticks!

The iron man's large feet stomped to the edge of the narrow cliff.

The metal massive man's feet reflective the dark night sky.

The brave iron man swayed majestically with the weight of the wind.



Willow Class Reminders

- **Monday/Tuesday-** PE days
Children need to come into school wearing PE kits **and a spare pair of shoes**
Please remember your school shoes and socks- we had lots of wet and cold feet!
- Spelling test: **Friday 24th November 2023**

Homework- We are having a big push on homework this term, please do encourage children to complete their homework.

Weekly spellings- These can be found in homework folders and our class page

Week reading- The children are really enjoying reading, it is lovely when they come into school all excited. This term we will be announcing a 'reading champion' for the term.

Weekly maths- This term I will be sending out weekly maths homework that connect with our weekly maths of the week. I will always explain the homework to the children and provide support on our class page. As always, please do email if there are any problems.