

Beech Class Weekly Update

Friday 14th March 2025

British Science Week

Monday:

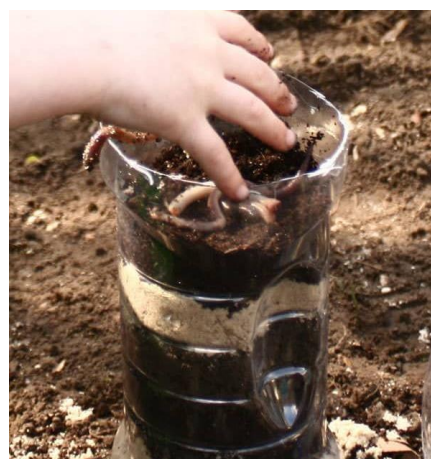
Zoolab

We kickstarted our week with a special message from the Zoolab Rangers and their animal team. We are super excited for their visit to us on Wednesday 19th March!



Wormerys

In the afternoon, we made wormerys. The compost created in a wormery is loaded with nutrients, making it fantastic for your plants and garden soil. Worm compost (also known as “worm castings”) contains beneficial microbes that support soil health, improving its structure and water retention. Using this natural compost in your garden promotes healthier, more vibrant plants, and it’s all thanks to the efforts of your hardworking worms!







Tuesday

Top of the Crops: We learned about selective breeding. We gathered a range of tomato varieties and discussed how to decide which one is the best.

We explored different categories such as shape, size, taste. The children then halved the selected tomatoes. They scooped the seeds out into a shallow cup of water. We placed the cups safely on the side. After 4 or 5 days mould will have developed. When this occurs, we will pour the seeds into a sieve and wash them thoroughly with water to remove the mould. Then we will arrange the seeds on a piece of kitchen roll to dry out. Once the seeds are dry, they will be ready to be planted. As the tomatoes grow, we will examine them. We will compare how they are similar/ different to the original tomato?





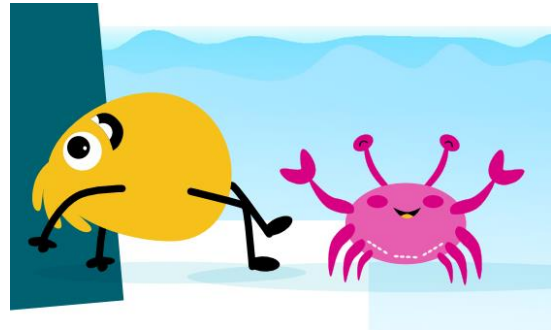


Finn then had the idea to feed the remainder of the tomatoes to the worms in the wormery. We also gave them some water to drink!



Deep Sea Yoga Discovery

This activity combined physical movement with learning about marine life and their adaptations, promoting both physical wellness and environmental awareness.



Thursday

Should we flush it away?

We carried out an investigation by testing different materials to see which items change and breakdown easily in water so can be flushed away We asked questions: What can we flush away apart from pee and poo? Items like wet wipes do not breakdown in water so when they are flushed down the toilet they mix with grease in the sewer and form massive solids called fatbergs.



Friday

Science Week Posters: The children have taken these home to finish! 😊

Gentle Reminders:

Reading:

In school, the children read daily across the curriculum with Mrs. Oliveira. For example, during phonics they read words and sentences, in writing lessons the read text extracts, in reading lessons, we explore books and texts together, in science and humanities, we read from websites, books, articles and powerpoints. The expectation is that you read their Jolly Phonics / free reading book with them at home. As they finish each book, they move onto the next one. This really supports their learning journey.

PE:

PE takes place on Tuesday. Please send your child to school in their PE kit.

Topic Home-learning Task and Beech Open Morning – see file for more details

[Beech Class \(Years 1 & 2\) - SIBFORD GOWER ENDOWED PRIMARY SCHOOL](#)

[beech class topic home learning.pdf](#)

Thank you again, for your continued support. It is greatly appreciated.

Mrs. Oliveira